

**INSTALLATION NOTES:**

1. BTU GROUND CONDUCTOR
2. BACKHAUL DEMARCATION
3. BTU GROUND ELECTRODE
4. SLAB-MOUNTED EQUIPMENT CABINET
5. AC POWER DISCONNECT
6. WIRELESS INSTALLATION GROUND ELECTRODE
7. METER SOCKET - REFER TO BTU ELECTRIC SERVICE STANDARDS
8. SERVICE DISCONNECT SWITCH - REFER TO BTU ELECTRIC SERVICE STANDARDS
9. WIRELESS BACKHAUL
10. WIRELESS PROVIDER GROUND CONDUCTOR

**GENERAL NOTES:**

- a. BTU PERSONNEL SHALL DE-ENERGIZE WIRELESS EQUIPMENT PRIOR TO PERFORMING ANY WORK ON POLE.
- b. ALL WIRELESS INSTALLATIONS WILL BE METERED AND SHALL COMPLY WITH BTU ELECTRIC SERVICE STANDARDS AND ALL OTHER APPLICABLE CODES.
- c. ALL CABINET LOCATIONS MUST BE PRE-APPROVED BY BTU AND THE R.O.W JURISDICTION.

PROFILE  
DRAWING NOT TO SCALE




WIRELESS INSTALLATION  
COMM SPACE 4G/5G SIDE MOUNT  
ANTENNA AND SLAB MOUNTED  
EQUIPMENT CABINET

BTU WIRELESS ATTACHMENT  
PROGRAM

STANDARD NO. 11

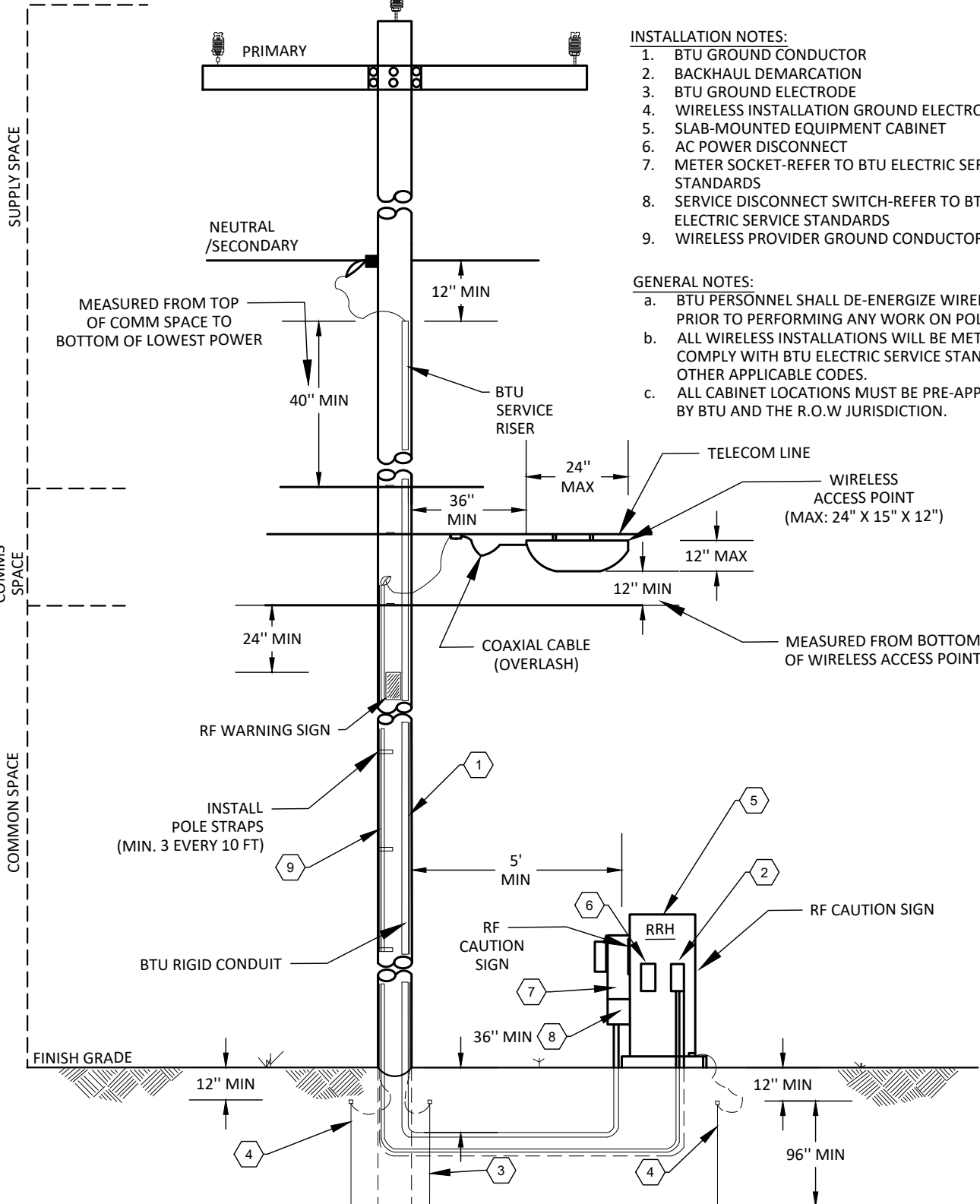
PAGE:	01 OF 08
SCALE:	N.T.S.
DATE:	06/14/2021

PREPARED BY:



**AEPARMIA  
ENGINEERING**

9101 BURNET RD.,  
SUITE 220,  
AUSTIN, TX 78758  
info@aeparmia.com  
www.aeparmia.com  
TBPE FIRM NO. 19271



- INSTALLATION NOTES:**
1. BTU GROUND CONDUCTOR
  2. BACKHAUL DEMARCATION
  3. BTU GROUND ELECTRODE
  4. WIRELESS INSTALLATION GROUND ELECTRODE
  5. SLAB-MOUNTED EQUIPMENT CABINET
  6. AC POWER DISCONNECT
  7. METER SOCKET-REFER TO BTU ELECTRIC SERVICE STANDARDS
  8. SERVICE DISCONNECT SWITCH-REFER TO BTU ELECTRIC SERVICE STANDARDS
  9. WIRELESS PROVIDER GROUND CONDUCTOR

- GENERAL NOTES:**
- a. BTU PERSONNEL SHALL DE-ENERGIZE WIRELESS EQUIPMENT PRIOR TO PERFORMING ANY WORK ON POLE.
  - b. ALL WIRELESS INSTALLATIONS WILL BE METERED AND SHALL COMPLY WITH BTU ELECTRIC SERVICE STANDARDS AND ALL OTHER APPLICABLE CODES.
  - c. ALL CABINET LOCATIONS MUST BE PRE-APPROVED BY BTU AND THE R.O.W JURISDICTION.

**OFF-POLE WIRELESS EQUIPMENT  
CABINET PROFILE  
DRAWING NOT TO SCALE**



**WIRELESS INSTALLATION MID-SPAN  
WIRELESS EQUIPMENT AND  
SLAB MOUNTED EQUIPMENT  
CABINET**

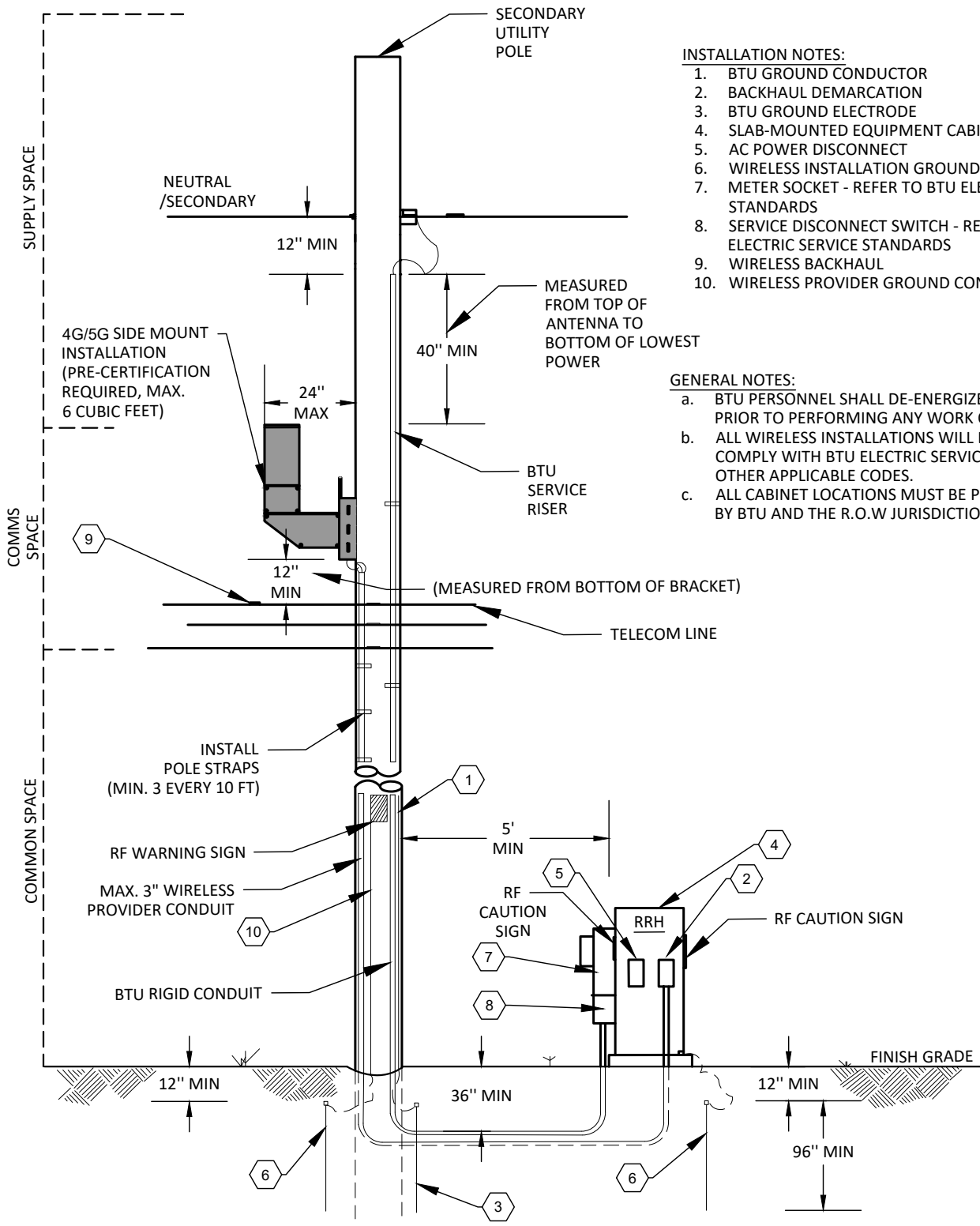
**BTU WIRELESS ATTACHMENT  
PROGRAM**

<b>STANDARD No. 12</b>	
PAGE:	02 OF 08
SCALE:	N.T.S.
DATE:	06/14/2021

PREPARED BY:

**AEPARMIA  
ENGINEERING**

9101 BURNET RD.,  
SUITE 220,  
AUSTIN, TX 78758  
info@aeparmia.com  
www.aeparmia.com  
TBPE FIRM NO. 19271



**INSTALLATION NOTES:**

1. BTU GROUND CONDUCTOR
2. BACKHAUL DEMARCATION
3. BTU GROUND ELECTRODE
4. SLAB-MOUNTED EQUIPMENT CABINET
5. AC POWER DISCONNECT
6. WIRELESS INSTALLATION GROUND ELECTRODE
7. METER SOCKET - REFER TO BTU ELECTRIC SERVICE STANDARDS
8. SERVICE DISCONNECT SWITCH - REFER TO BTU ELECTRIC SERVICE STANDARDS
9. WIRELESS BACKHAUL
10. WIRELESS PROVIDER GROUND CONDUCTOR

**GENERAL NOTES:**

- a. BTU PERSONNEL SHALL DE-ENERGIZE WIRELESS EQUIPMENT PRIOR TO PERFORMING ANY WORK ON POLE.
- b. ALL WIRELESS INSTALLATIONS WILL BE METERED AND SHALL COMPLY WITH BTU ELECTRIC SERVICE STANDARDS AND ALL OTHER APPLICABLE CODES.
- c. ALL CABINET LOCATIONS MUST BE PRE-APPROVED BY BTU AND THE R.O.W JURISDICTION.

**PROFILE  
DRAWING NOT TO SCALE**

BRYAN TEXAS UTILITIES  
  
 THE DIFFERENCE IS YOU  
 205 E 28TH ST.  
 BRYAN, TX 77803


WIRELESS INSTALLATION  
 COMM SPACE 4G/5G SIDE MOUNT  
 ANTENNA AND SLAB MOUNTED  
 EQUIPMENT CABINET

---

BTU WIRELESS ATTACHMENT  
 PROGRAM

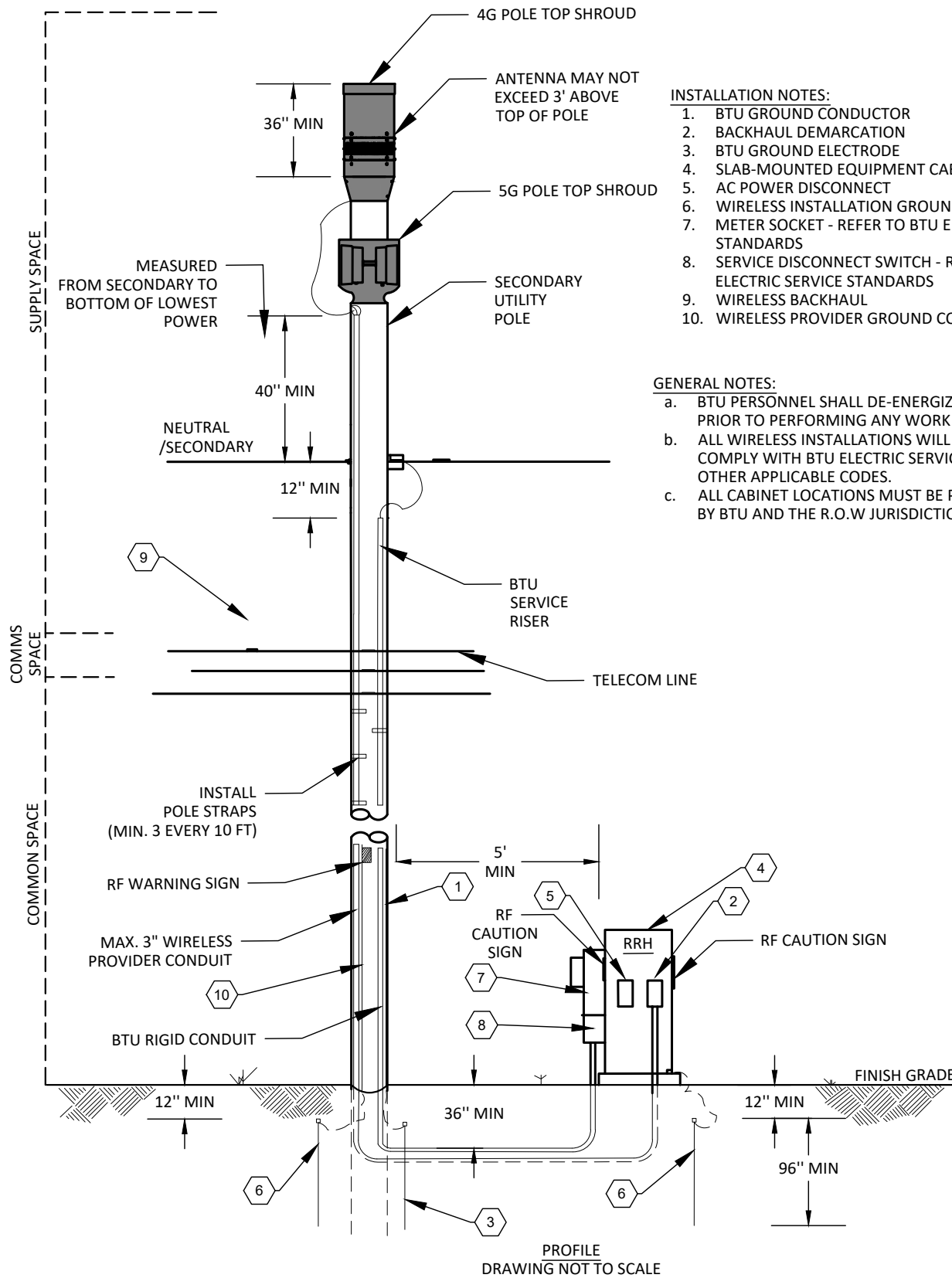
<b>STANDARD NO. 13</b>	
PAGE:	03 OF 08
SCALE:	N.T.S.
DATE:	06/14/2021

PREPARED BY:



**AEPARMIA  
ENGINEERING**

9101 BURNET RD.,  
 SUITE 220,  
 AUSTIN, TX 78758  
 info@aeparmia.com  
 www.aeparmia.com  
 TBPE FIRM NO. 19271



**INSTALLATION NOTES:**

1. BTU GROUND CONDUCTOR
2. BACKHAUL DEMARCATION
3. BTU GROUND ELECTRODE
4. SLAB-MOUNTED EQUIPMENT CABINET
5. AC POWER DISCONNECT
6. WIRELESS INSTALLATION GROUND ELECTRODE
7. METER SOCKET - REFER TO BTU ELECTRIC SERVICE STANDARDS
8. SERVICE DISCONNECT SWITCH - REFER TO BTU ELECTRIC SERVICE STANDARDS
9. WIRELESS BACKHAUL
10. WIRELESS PROVIDER GROUND CONDUCTOR

**GENERAL NOTES:**

- a. BTU PERSONNEL SHALL DE-ENERGIZE WIRELESS EQUIPMENT PRIOR TO PERFORMING ANY WORK ON POLE.
- b. ALL WIRELESS INSTALLATIONS WILL BE METERED AND SHALL COMPLY WITH BTU ELECTRIC SERVICE STANDARDS AND ALL OTHER APPLICABLE CODES.
- c. ALL CABINET LOCATIONS MUST BE PRE-APPROVED BY BTU AND THE R.O.W JURISDICTION.

PROFILE  
DRAWING NOT TO SCALE




WIRELESS INSTALLATION  
POLETOP 4G/5G SIDE ANTENNA ON  
SECONDARY POLE AND SLAB  
MOUNTED EQUIPMENT CABINET

BTU WIRELESS ATTACHMENT  
PROGRAM

STANDARD NO. 14

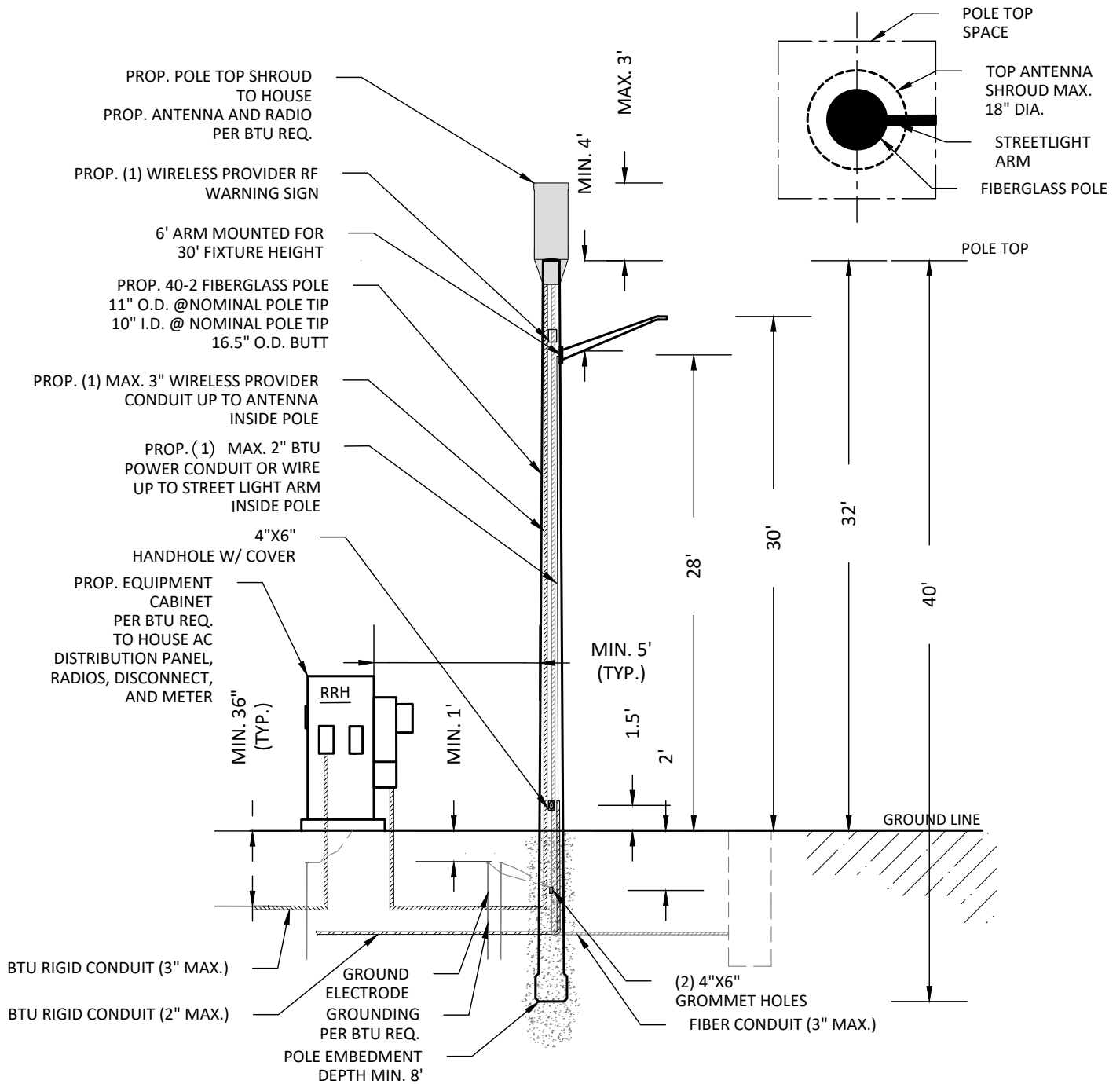
PAGE:	04 OF 08
SCALE:	N.T.S.
DATE:	06/14/2021

PREPARED BY:



**AEPARMIA  
ENGINEERING**

9101 BURNET RD.,  
SUITE 220,  
AUSTIN, TX 78758  
info@aeparmia.com  
www.aeparmia.com  
TBPE FIRM NO. 19271



**GENERAL NOTES:**

1. CONTRACTOR SHALL USE THIS BTU APPROVED STANDARD FOR TOP MOUNT WIRELESS ATTACHMENT FOR STREETLIGHT POLES.
2. CONTRACTOR SHALL USE THE FIBERGLASS POLE PART #DX40AXDN1-CLAS2 (ARM6) OR APPROVED EQUIVALENT.
3. BTU PERSONNEL SHALL DE-ENERGIZE WIRELESS EQUIPMENT PRIOR TO PERFORMING ANY WORK ON POLE.
4. ALL WIRELESS INSTALLATIONS WILL BE METERED AND SHALL COMPLY WITH BTU ELECTRIC SERVICE STANDARDS AND ALL OTHER APPLICABLE CODES.
5. FIELD DRILLING OF POLE IS NOT ALLOWED WITHOUT PRIOR WRITTEN NOTICE OF MANUFACTURER AND PERMISSION FROM BTU. DRILLING SHALL ONLY BE DONE WITH A CARBIDE OR DIAMOND BIT.
6. ALL CONDUITS AND EQUIPMENT MUST BE CLEARLY LABELED FOR OWNERSHIP.
7. CONTRACTOR SHALL COMPLY WITH ANSI REQUIREMENTS.
8. CONTRACTOR SHALL ABIDE WITH BTU EMBEDMENT REQUIREMENTS FOR MINIMUM DEPTH OF 8 FEET.
9. POLE AND SHROUDS COLOR BLACK SHALL BE APPROVED BY BTU.

PROFILE  
DRAWING NOT TO SCALE



WIRELESS INSTALLATION - POLETOP  
4G ANTENNA ON STREETLIGHT  
POLE AND SLAB MOUNTED  
EQUIPMENT CABINET

BTU WIRELESS ATTACHMENT  
PROGRAM

STANDARD No. 15

PAGE: 05 OF 08

SCALE: N.T.S.

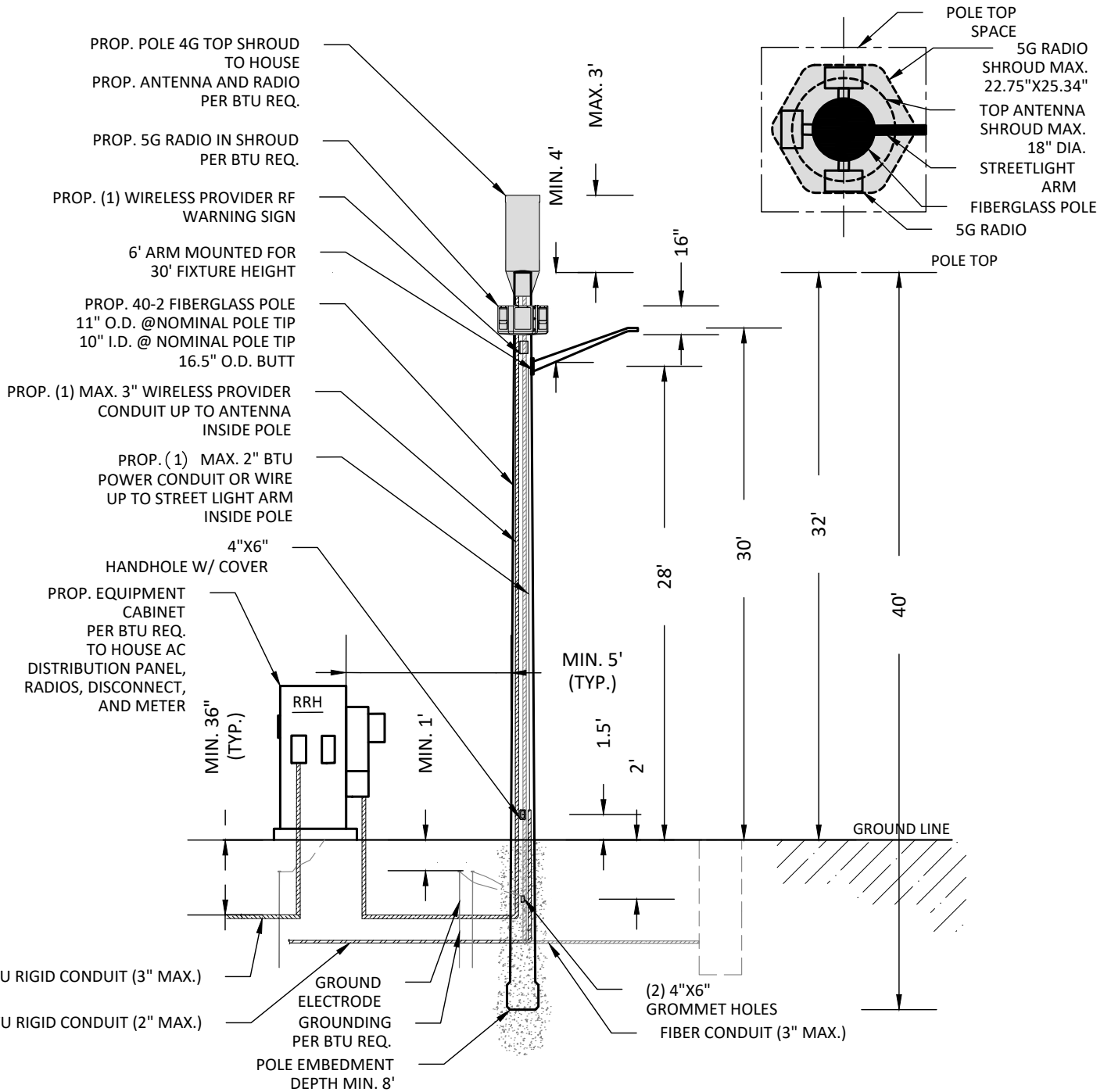
DATE: 06/14/2021

PREPARED BY:



AEPARMIA  
ENGINEERING



9101 BURNET RD.,  
SUITE 220,  
AUSTIN, TX 78758  
info@aeparmia.com  
www.aeparmia.com  
TBPE FIRM NO. 19271

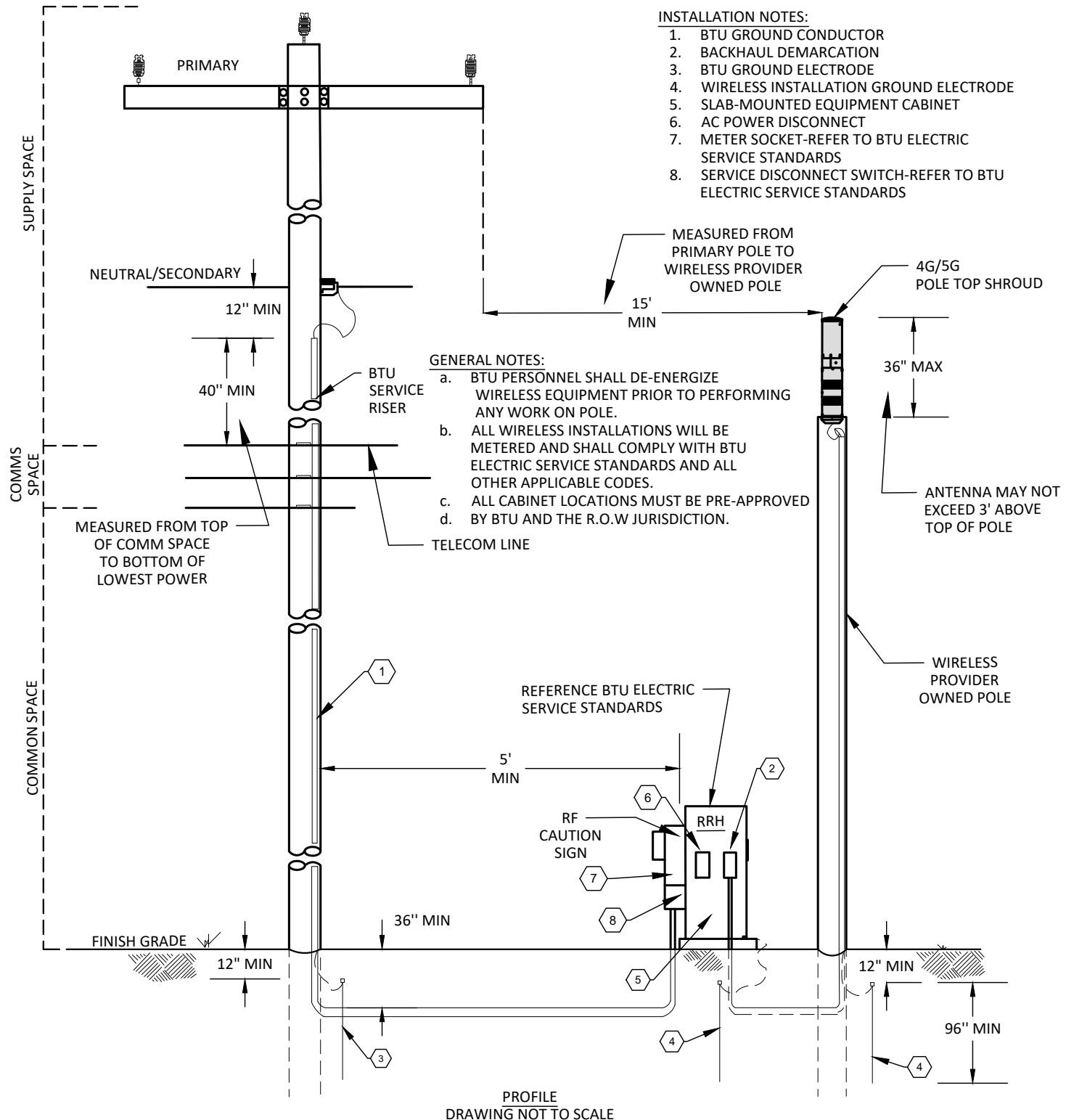


**GENERAL NOTES:**

1. CONTRACTOR SHALL USE THIS BTU APPROVED STANDARD FOR TOP MOUNT WIRELESS ATTACHMENT FOR STREETLIGHT POLES.
2. CONTRACTOR SHALL USE THE FIBERGLASS POLE PART #DX40AXDN1-CLAS2 (ARM6) OR APPROVED EQUIVALENT.
3. BTU PERSONNEL SHALL DE-ENERGIZE WIRELESS EQUIPMENT PRIOR TO PERFORMING ANY WORK ON POLE.
4. ALL WIRELESS INSTALLATIONS WILL BE METERED AND SHALL COMPLY WITH BTU ELECTRIC SERVICE STANDARDS AND ALL OTHER APPLICABLE CODES.
5. FIELD DRILLING OF POLE IS NOT ALLOWED WITHOUT PRIOR WRITTEN NOTICE OF MANUFACTURER AND PERMISSION FROM BTU. DRILLING SHALL ONLY BE DONE WITH A CARBIDE OR DIAMOND BIT.
6. ALL CONDUITS AND EQUIPMENT MUST BE CLEARLY LABELED FOR OWNERSHIP.
7. CONTRACTOR SHALL COMPLY WITH ANSI REQUIREMENTS.
8. CONTRACTOR SHALL ABIDE WITH BTU EMBEDMENT REQUIREMENTS FOR MINIMUM DEPTH OF 8 FEET.
9. POLE AND SHROUDS COLOR BLACK SHALL BE APPROVED BY BTU.

PROFILE  
DRAWING NOT TO SCALE

	<b>WIRELESS INSTALLATION - POLETOP 4G/5G ANTENNA ON STREETLIGHT POLE AND SLAB MOUNTED EQUIPMENT CABINET</b>	<b>STANDARD No. 16</b>		PREPARED BY:  <b>AEPARMIA ENGINEERING</b>
	<b>BTU WIRELESS ATTACHMENT PROGRAM</b>	PAGE: 06 OF 08	SCALE: N.T.S.	9101 BURNET RD., SUITE 220, AUSTIN, TX 78758 info@aeparmia.com www.aeparmia.com TBPE FIRM NO. 19271
		DATE: 06/14/2021		



- INSTALLATION NOTES:**
1. BTU GROUND CONDUCTOR
  2. BACKHAUL DEMARCATION
  3. BTU GROUND ELECTRODE
  4. WIRELESS INSTALLATION GROUND ELECTRODE
  5. SLAB-MOUNTED EQUIPMENT CABINET
  6. AC POWER DISCONNECT
  7. METER SOCKET-REFER TO BTU ELECTRIC SERVICE STANDARDS
  8. SERVICE DISCONNECT SWITCH-REFER TO BTU ELECTRIC SERVICE STANDARDS

- GENERAL NOTES:**
- a. BTU PERSONNEL SHALL DE-ENERGIZE WIRELESS EQUIPMENT PRIOR TO PERFORMING ANY WORK ON POLE.
  - b. ALL WIRELESS INSTALLATIONS WILL BE METERED AND SHALL COMPLY WITH BTU ELECTRIC SERVICE STANDARDS AND ALL OTHER APPLICABLE CODES.
  - c. ALL CABINET LOCATIONS MUST BE PRE-APPROVED BY BTU AND THE R.O.W JURISDICTION.
  - d.

PROFILE DRAWING NOT TO SCALE

NOTE: ANY PROVIDER THAT WISHES TO INSTALL ITS OWN "NODE SUPPORT POLE" WITHIN THE BTU SERVICE AREA, PURSUANT TO CHAPTER 284 OF THE TEXAS LOCAL GOVERNMENT CODE, SHALL MAKE A REQUEST FOR ELECTRIC SERVICE. BTU SHALL PROVIDE ELECTRIC SERVICE TO THE "NODE SUPPORT POLE" BASED ON THE REQUIREMENTS OF THIS TECHNICAL DRAWING

WIRELESS INSTALLATION  
4G/5G NODE SUPPORT POLE AND  
SLAB-MOUNTED EQUIPMENT  
CABINET

BTU WIRELESS ATTACHMENT  
PROGRAM

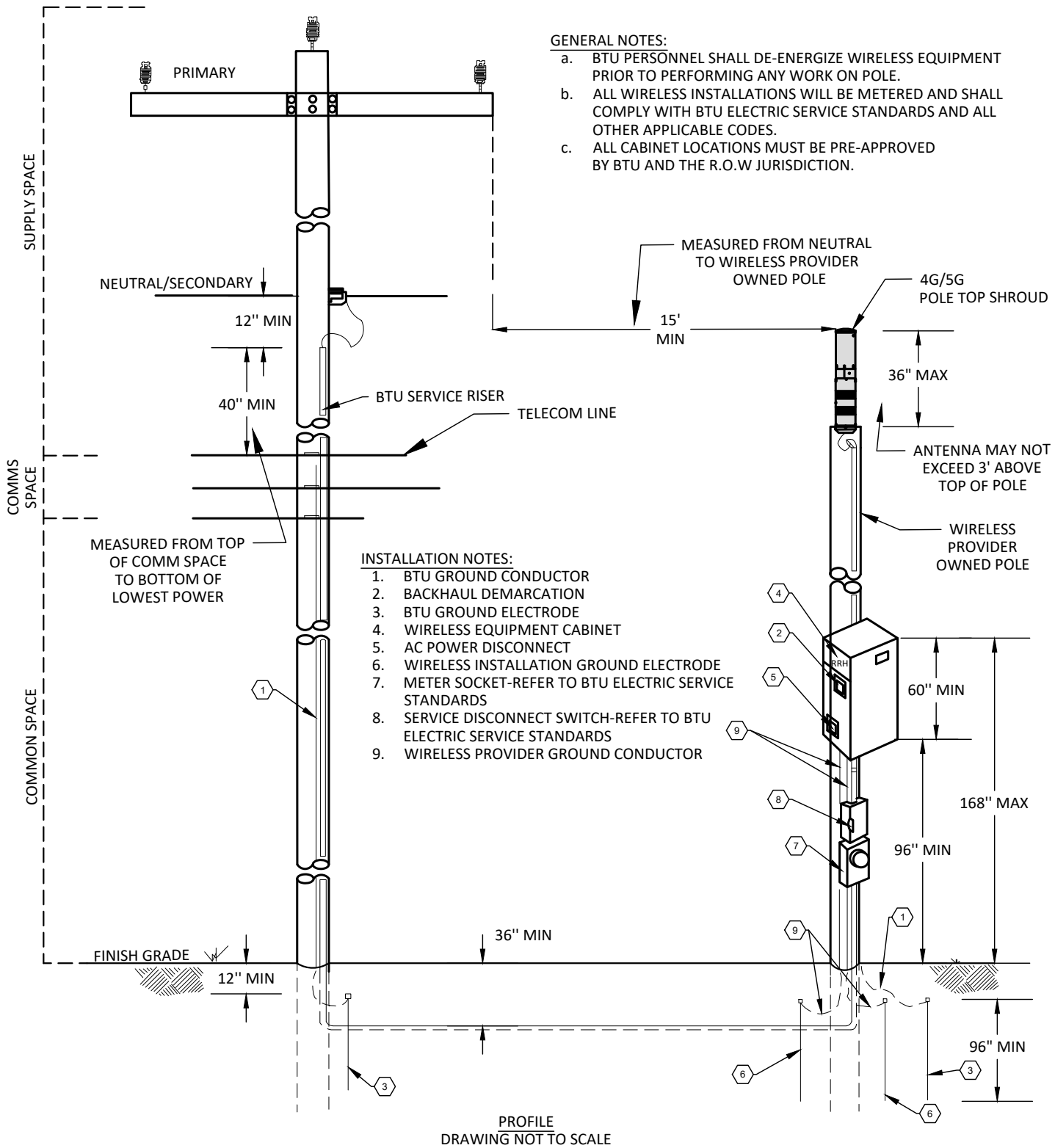
STANDARD No. 113	
PAGE:	07 OF 08
SCALE:	N.T.S.
DATE:	06/14/2021

PREPARED BY:

**AEPARMIA  
ENGINEERING**

9101 BURNET RD.,  
SUITE 220,  
AUSTIN, TX 78758  
info@aeparmia.com  
www.aeparmia.com  
TBPE FIRM NO. 19271





- GENERAL NOTES:**
- a. BTU PERSONNEL SHALL DE-ENERGIZE WIRELESS EQUIPMENT PRIOR TO PERFORMING ANY WORK ON POLE.
  - b. ALL WIRELESS INSTALLATIONS WILL BE METERED AND SHALL COMPLY WITH BTU ELECTRIC SERVICE STANDARDS AND ALL OTHER APPLICABLE CODES.
  - c. ALL CABINET LOCATIONS MUST BE PRE-APPROVED BY BTU AND THE R.O.W JURISDICTION.

- INSTALLATION NOTES:**
1. BTU GROUND CONDUCTOR
  2. BACKHAUL DEMARCATION
  3. BTU GROUND ELECTRODE
  4. WIRELESS EQUIPMENT CABINET
  5. AC POWER DISCONNECT
  6. WIRELESS INSTALLATION GROUND ELECTRODE STANDARDS
  7. METER SOCKET-REFER TO BTU ELECTRIC SERVICE STANDARDS
  8. SERVICE DISCONNECT SWITCH-REFER TO BTU ELECTRIC SERVICE STANDARDS
  9. WIRELESS PROVIDER GROUND CONDUCTOR

NOTE: ANY PROVIDER THAT WISHES TO INSTALL ITS OWN "NODE SUPPORT POLE" WITHIN THE BTU SERVICE AREA, PURSUANT TO CHAPTER 284 OF THE TEXAS LOCAL GOVERNMENT CODE, SHALL MAKE A REQUEST FOR ELECTRIC SERVICE. BTU SHALL PROVIDE ELECTRIC SERVICE TO THE "NODE SUPPORT POLE" BASED ON THE REQUIREMENTS OF THIS TECHNICAL DRAWING

WIRELESS INSTALLATION  
4G/5G NODE SUPPORT POLE AND  
POLE MOUNTED EQUIPMENT  
CABINET

BTU WIRELESS ATTACHMENT  
PROGRAM

STANDARD No. 114	
PAGE:	08 OF 08
SCALE:	N.T.S.
DATE:	06/14/2021

PREPARED BY:

**AEPARMIA  
ENGINEERING**

9101 BURNET RD.,  
SUITE 220,  
AUSTIN, TX 78758  
info@aeparmia.com  
www.aeparmia.com  
TBPE FIRM NO. 19271