



BTU ©

# Regular Board of Directors MEETING NOTES | December 12, 2024

## Bucket Truck Order

The Board approved a change order to obtain two 2025 model Altec bucket trucks for use in the Distribution department.

## Company Volunteer Efforts

Gary Miller, General Manager, discussed BTU's involvement in the KBTX Food for Families Food Drive held on December 4, 2024. Each year, BTU makes a donation and works the first shift beginning at 5:30am to sort food items.

## Chamber of Commerce Ribbon Cutting

Gary Miller, General Manager, discussed the upcoming new Administration Building dedication and Chamber of Commerce Ribbon Cutting event on January 28, 2025.



BTU ©



## BTU KIOSKS

Pay using cash, card or check at any one of our three convenient locations by entering your account number, listed on either your bill or your reminder letter, or by scanning a keycard provided by BTU. Keycards can be requested in the BTU main office.

### KIOSK LOCATIONS

- BTU Drive Thru – open 24 hours
- HEB at Texas Ave. & Hwy 21 – open 6am-12am
- HEB in the Tejas Center – open 6am-12am

**BRYAN TEXAS UTILITIES**  
 205 East 28th Street • Bryan, TX 77803  
 email: ContactBTU@btutilities.com

**btutilities.com**

**Hours of Operation**  
 Monday - Friday, 8 AM - 5 PM

### Board of Directors

- Ms. Rosemarie L. Selman, Chair
- Mr. Pete J. Bienski, Jr., Vice Chair
- Mr. Paul Madison, Sr., Secretary
- Mr. John A. Bond
- Mr. Andrew Nelson
- Mr. A. Bentley Nettles
- Mr. Buppy Simank
- Mr. Jason Bienski, Ex-Officio
- Mr. Kevin Boriskie, Ex-Officio

### General Manager

Gary Miller

### Executive Directors

- Doug Lyles
- Randy Trimble
- Wes Williams
- David Werley, Chief Business Officer

### Division Managers

- James Bodine
- Nick Cook
- Shawndra Curry
- Ken Lindberg
- Clay Lindstrom

### City of Bryan

- Kean Register, City Manager
- Katherine Tapscott, Chief Financial Officer

### Important Numbers

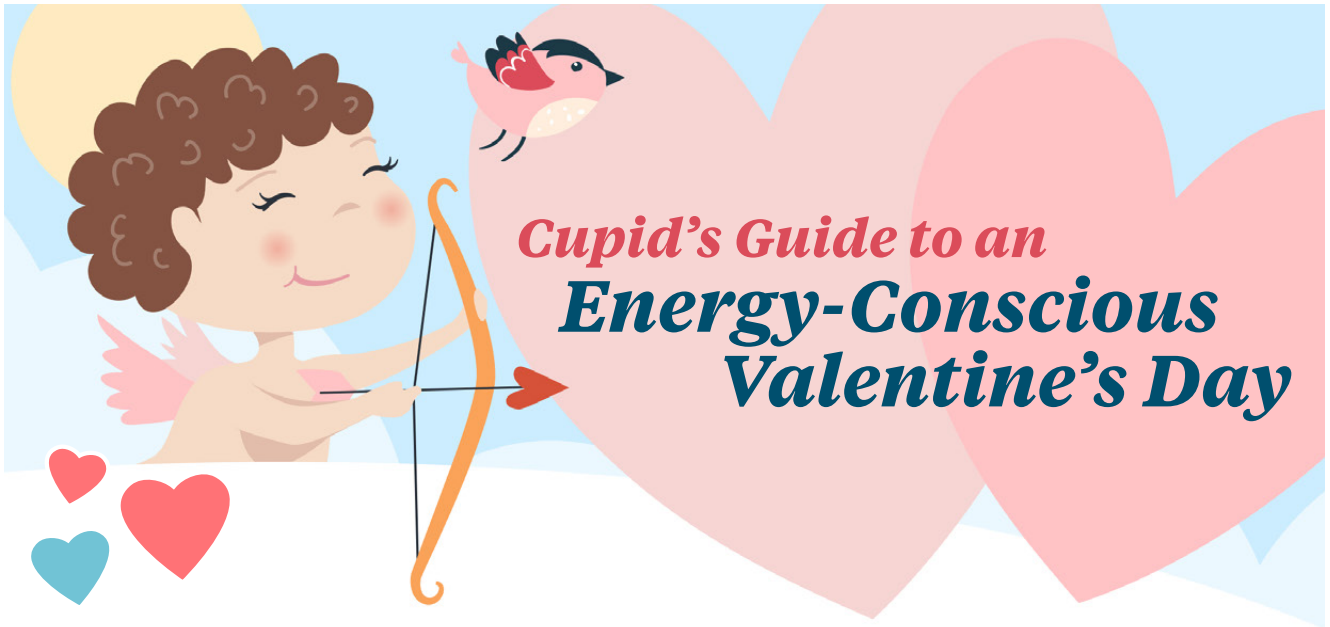
**Billing/Collections/Connects**  
(979) 821-5700

**Electrical Outage/Lines Down**  
(979) 822-3777

**Line Design**  
(979) 821-5770

### Social Media

- BryanTexasUtilities
- BTU\_BryanTX
- cityofbryan



# Cupid's Guide to an Energy-Conscious Valentine's Day

Valentine's Day is the perfect time to show your loved one—and your energy bill—a little TLC. Here are some creative ways couples can celebrate the holiday while keeping energy usage to a minimum:



## Dim the Lights for Romance

Set the mood with energy-efficient LED candles or dimmable LED bulbs. Not only do these options create an intimate atmosphere, but they also consume far less electricity than traditional lighting.

## Cook Together

Instead of dining out, plan a romantic dinner at home. Use energy-efficient appliances like slow cookers or air fryers to prepare your meal. If baking is on the menu, consider making multiple dishes at once to maximize your oven's efficiency.



## Unplug for Quality Time

Turn off the TV, put away the devices, and enjoy each other's company. Play board games, share stories, or take a walk. It's a chance to strengthen your connection while saving energy.



## Cuddle Up

Instead of turning up the thermostat, grab a cozy blanket and snuggle up with your partner. It's a fun and energy-saving way to stay warm during a romantic movie night.

## Give Energy-Saving Gifts

Skip the traditional chocolates and flowers and opt for practical gifts like smart thermostats, energy-efficient power strips, or even cozy blankets. By incorporating these energy-saving tips into your Valentine's Day plans, you can focus on creating lasting memories with that special someone while keeping your energy consumption in check. This Valentine's Day, love your wallet just as much as you love each other!

# HONORING BLACK CONTRIBUTIONS TO THE ELECTRIC INDUSTRY

As February arrives, Bryan Texas Utilities proudly joins the nation in celebrating Black History Month. This is a time to honor the countless contributions of African American individuals to the electric industry—pioneers whose work has illuminated homes, empowered innovation, and energized communities.



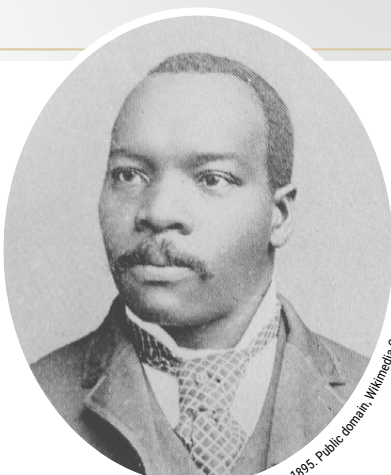
Museum of Science and Industry, Wikimedia Commons



Public domain, Wikimedia Commons

## LEWIS LATIMER

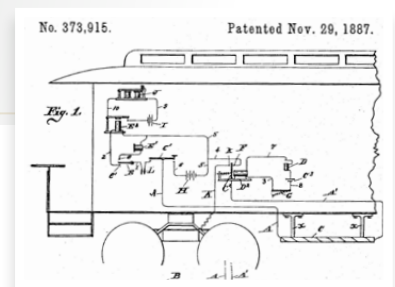
One of the most celebrated figures in the electric industry is Lewis Latimer. He was a self-taught inventor and draftsman. Born in 1848 to formerly enslaved parents, Latimer’s ingenuity led to a revolutionary improvement in the incandescent light bulb. In 1881, he patented a carbon filament that extended the bulb’s life and made it more affordable for everyday use. As a member of Thomas Edison’s engineering team, Latimer helped design the electrical systems that brought light to cities around the world.



The Cosmopolitan - 1895, Public domain, Wikimedia Commons

## GRANVILLE WOODS

Granville Woods was another prolific inventor, earning over 60 patents in his lifetime, many of which were related to electrical systems and railroads. Woods, often referred to as the “Black Edison”, created the multiplex telegraph, a device that allowed communication between moving trains and railway stations, enhancing safety and efficiency. A form of his “third rail” device is still the foundation for many electric transit systems today.



Public domain, Wikimedia Commons



## HAZEL O'LEARY

In 1993, Hazel O'Leary made history as the first woman and African American to serve as U.S. Secretary of Energy, appointed by President Bill Clinton. During her four-year tenure, O'Leary led transformative initiatives in the energy sector, including launching an aggressive cleanup of nuclear waste sites and creating an Openness Advisory Panel to increase public transparency about nuclear activities. She was instrumental in the Clinton administration's decision to end nuclear testing in the United States and was a passionate advocate for energy efficiency and renewable energy.



U.S. Department of Energy / Public domain, Wikimedia Commons



## DR. SHIRLEY ANN JACKSON

Dr. Shirley Ann Jackson, a physicist and trailblazer, became the first African American woman to earn a doctorate from MIT. Jackson served as chair of the U.S. Nuclear Regulatory Commission, and played a key role in shaping energy policy and ensuring the safety of nuclear power plants. Today, she leads the Rensselaer Polytechnic Institute as President.



World Economic Forum / Public domain, Wikimedia Commons

During the month of February, let's celebrate these amazing men and women, along with all of the many lesser known pioneers that shaped the electric industry as we know it today. We recognize that innovation thrives when diverse perspectives come together. Let's continue to build on the legacies these leaders have built to empower generations to come.

# WINTER WEATHER

## Myths and Facts



Winter weather can bring icy roads, frigid temperatures, and the occasional snow day, but it also brings plenty of misconceptions. Let's separate myth from fact to help you prepare, stay safe, and be energy efficient this season.



**Myth:** Turning up the thermostat heats your home faster.

**Fact:** If you have a heat pump, turning up the thermostat by several degrees can trigger auxiliary heat strips that use resistance heating to warm the home. These heat strips use a great deal of energy, driving up your bill. It is recommended to set your thermostat as low as comfortably possible when you are home and even lower when you are away or sleeping.



**Myth:** Ceiling fans are useless in winter.

**Fact:** Ceiling fans can help distribute warm air. Set your fan to rotate clockwise at a low speed to push warm air down from the ceiling, making your living space feel more comfortable.



**Myth:** Space heaters are an energy-efficient way to heat your home.

**Fact:** While space heaters can be helpful for heating small areas, they are not efficient for warming entire homes. Use them sparingly and always follow safety guidelines to prevent fires.

**Myth:** Leaving the oven open after baking helps heat your home.

**Fact:** While your oven does emit heat, it's not designed to warm your home. Relying on it can increase your energy costs and pose safety risks. Stick to your home's heating system for warmth.

**Myth:** Leaving the thermostat at the same setting every month means the bill should be the same.

**Fact:** Weather greatly impacts energy usage. The colder the temperature outside, the harder your heater has to work to keep it warm inside. Help reduce the load on your heater by servicing it regularly, adding insulation in your home, and keeping it at a moderate setting.



**Myth:** Closing vents in unused rooms saves energy.

**Fact:** Closing vents can disrupt airflow and increase pressure in your ductwork, which can strain your HVAC system and reduce efficiency. Avoid closing vents and keep internal doors open whenever possible to encourage consistent temperatures throughout the home.

**Myth:** Fireplaces are an energy efficient way to heat your home.

**Fact:** Fireplaces provide some warmth, and a lovely ambiance, but they are not very energy efficient. Using your fireplace requires the damper to be open in the chimney, allowing warm air to escape. If you are relying on a fireplace for heat, couple it with a heat-air exchange system that blows the warm air back into the room.



**Myth:** Drafts cannot be prevented during cold weather.

**Fact:** Drafts can be reduced by installing caulking or weather-stripping around exterior doors and windows. This is a low-cost project that is easy to DIY. Just visit your local hardware store to pick up the supplies.

**Myth:** It is normal for the heater to emit a burning smell when you turn it on the for the first time each year.

**Fact:** This is usually due to a buildup of dust and debris on the components that burns off when the heat is first activated. To prevent this from happening, regularly clean your unit and have it serviced by a professional.

Knowing the facts about winter weather can help you stay safe, save energy, and protect your home. For more tips and resources, visit [btutilities.com](https://btutilities.com).

**FREE**  
**Microchip and Rabies Vaccination Event**



CITY OF BRYAN ©

CITY OF BRYAN ©

# Saturday, March 8

## 8 a.m. – Noon | Scurry Park

Registration is required by March 5, and walk-ups will not be accepted.

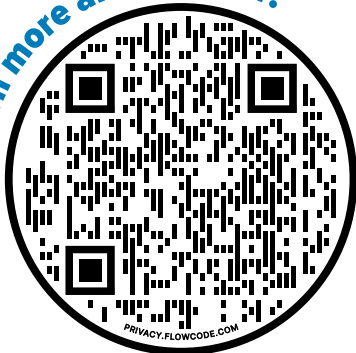
All participants/pets must live within Bryan’s city limits. Proof of residency is required at the event (BTU bill, lease agreement, gas bill, etc.) and a valid photo ID.

Limit four pets per household. Pets must be on a leash or in a crate during the event.

*Supplies are limited and first come, first served.*



Learn more and register:



PRIVACY.FLOWCODE.COM

Visit **BryanAnimalCenter.com**  
or call **979-209-5264** for more information.



**Ages  
55+**

CITY OF BRYAN PARKS & RECREATION

# DESTINATION TO Paradise Dance

**FRIDAY,  
MARCH 14  
7 - 10 P.M.  
BRAZOS CENTER**

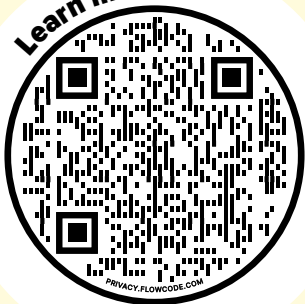
Dress for your favorite travel destination and get ready to dance the night away!

Enjoy a live DJ, heavy hors d'oeuvres, a cash bar, photo booth, costume contest, and door prizes.

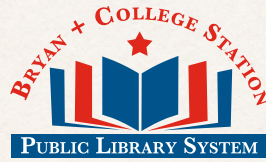
Presale tickets are \$10 and available at the Parks and Recreation Department, Neal Recreation Center, or Bryan Aquatic Center. Tickets are \$15 at the door.



Learn more:



[bryantx.gov/SeniorDance](http://bryantx.gov/SeniorDance) • 979-209-5528



**Free admission!**

## BRAZOS VALLEY Children's Literary Festival

**Saturday, April 5**

**9 a.m. - 3 p.m. / Larry J. Ringer Library**

Join the Bryan + College Station Public Library System for a day of author readings, presentations, book signings, storytelling, book sales, arts and crafts, games, and much more!

### Featured Authors/Storyteller

**Chris Barton  
Don Tate  
Mari Mancusi  
Bernadette Nason**

Books by featured and local authors will be available for purchase and signing during the festival through Hyperbole Bookstore, with 10% of proceeds donated to the Friends of the Bryan + College Station Public Library System.



Learn more: [bcslibrary.org/literaryfestival](http://bcslibrary.org/literaryfestival)

**The  
Newberry  
Sponsor**

**amazon  
Prime Air**

**The  
Caldecott  
Sponsor**

**ATMOS  
energy**